

---

# **DANIELS SCHOOL OF BUSINESS**

# **Board of Trustee Update**

**Jim Bullard**

**Dr. Samuel R. Allen Dean**

---

**DECEMBER 2025**

# *Strategic Vision*

## ACADEMIC PROWESS

- Recruit leading faculty
- Develop current faculty
- PhD Program
- Research Visibility

## TRANSFORMATIONAL STUDENT EXPERIENCE

- Student Recruitment
- Affinity & Belonging
- Experiential Learning
- Student Success
- Teaching Innovation

## INTEGRATION OF STEM + BUSINESS

- Interdisciplinary Programs
- Technology Competency
- Curriculum Pathways
- Entrepreneurship Ecosystem @ Purdue

## FREEDOM & CAPITALISM

- Thought Leadership
- Deepening Student Understanding
- Cornerstone for Business 2.0
- Entrepreneurship Spirit

## POWERED BY BUSINESS PARTNERSHIPS

- Advisory for Employer Readiness
- Engagement and Outreach with friends of Purdue
- Executive Education
- Local and State Community Engagement

## OPERATIONAL EXCELLENCE

- Effective Governance
- Transparency, Accountability and Citizenship
- Financial Sustainability
- Quality Culture & Operations

# *Rankings Update*

- Best Business School in the U.S., #17 (CEO World 2025)
- #15 in the U.S., #3 in the Big18, Top 5 Public Business School (REPEC, Oct. 2025)
- #24 Best Graduate Business Programs (U.S. News 2026)
- Three programs newly in US News Rankings, two in the top ten in the U.S.

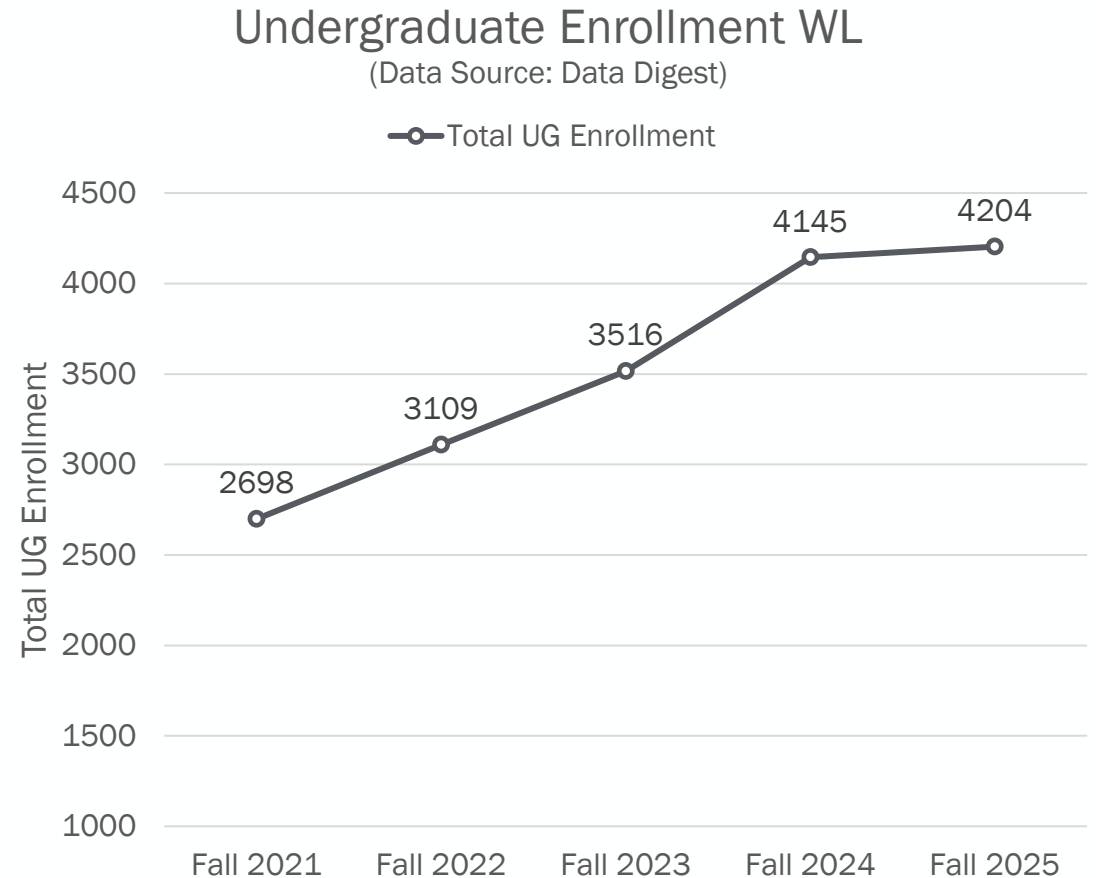
# *New Departments*

- Overwhelming faculty support moved from 2 to 9 departments July 1, 2025
- New department leadership - Currently in the first year of establishing operational procedures and policies for future school success



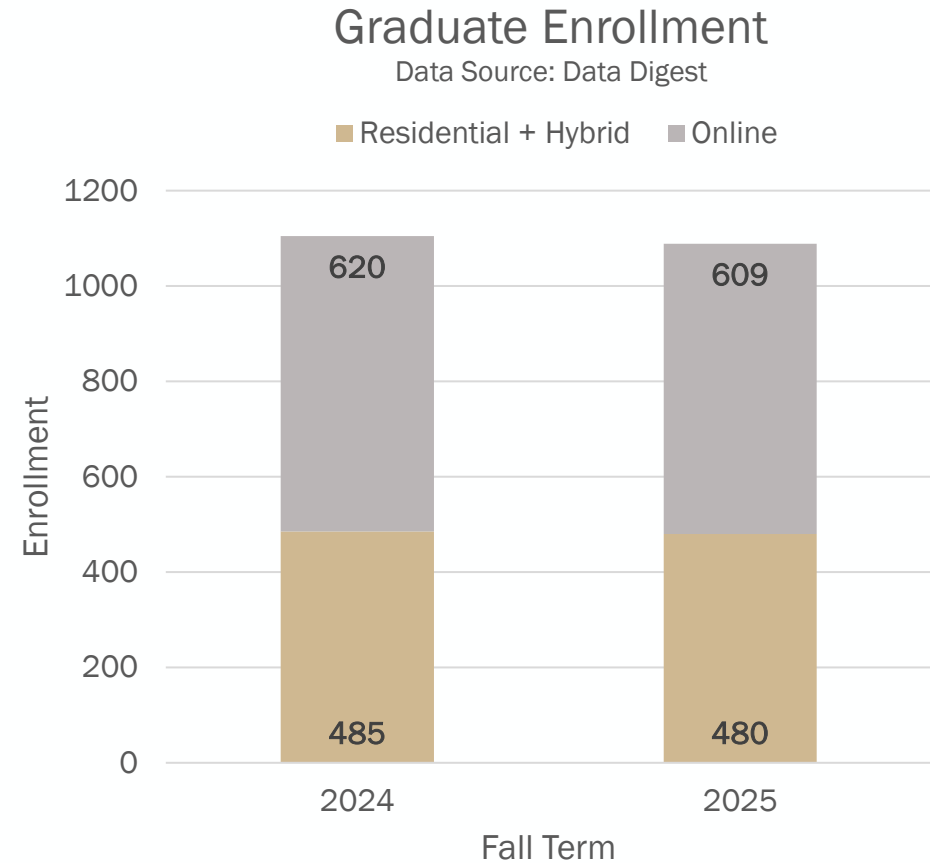
# *Undergraduate Enrollment*

- 847 New Beginners
  - Average HS GPA 3.75 (+0.07 vs. last year)
  - Average SAT Total: 1301 (+12 vs. last year)
  - Average ACT Composite: 29.4 (+1.0 vs. last year)
- 32 students in Indianapolis, IBE major



# *Graduate Student Enrollment*

- 480 students despite visa challenges
- MBT
  - Second residential MBT cohort – 32 students
  - Online cohort – 30 students for Fall
- MBA
  - Price reduction for online to meet competition, see increased interest



# ***Business Partnerships***

## **OFFICE OF BUSINESS PARTNERSHIPS**



## **EXPERIENTIAL LEARNING**



## **PARTNER ENGAGEMENT**



## **ALUMNI RELATIONS**



## **EXECUTIVE EDUCATION**



# *Integration of STEM + Business*

## INTEGRATED BUSINESS AND ENGINEERING (IBE)



- The IBE program prepares students to make data-driven business decisions grounded in technology, math and engineering principles.
- 95% placement rate (first cohort).

## MASTER OF BUSINESS AND TECHNOLOGY (MBT)



- The MBT goes beyond the traditional boundaries of business education, providing a holistic understanding of the business- technology nexus.
- Curriculum developed with a nod to MSIM

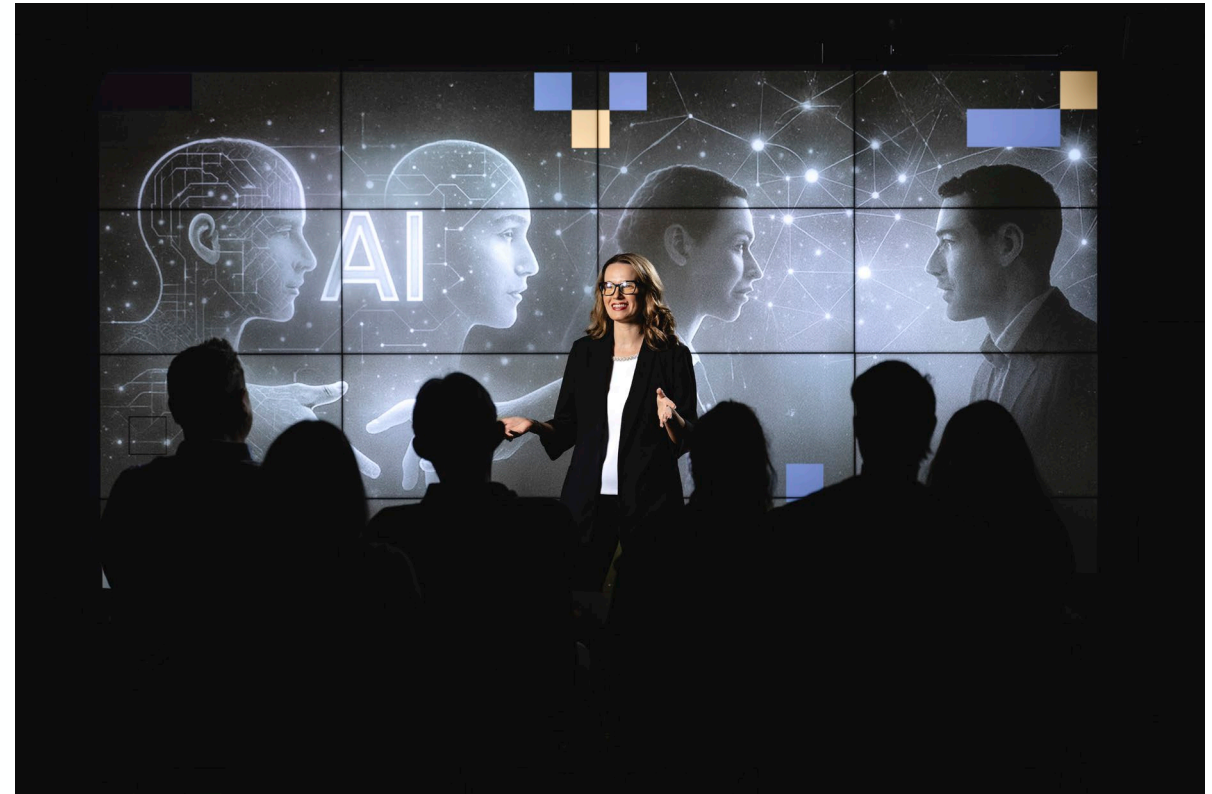
## PURDUE IN INDIANAPOLIS



- IBE launched in Fall 2025
- MBT hybrid format coming Fall 2026
- Offering business minors to non-business students
- Introducing new student experiences
- Other academic offerings under consideration

# *AI Update*

- Defined a DSB philosophy on AI for teaching & learning
- Launched a required AI Foundations course for all freshmen
- Exploring a mapping of AI competencies and employer expectations by majors
- Completed 5 cohorts of custom Executive Education AI training



# *Executive Forum and Cornerstone for Business*

## DEVOS SERIES



- "The closer you get to free enterprise and the more you allow people to thrive in their own environment and reach their own potential, the better they are going to do." - Doug DeVos
- Principles of Business Leadership is the next course offering within our Cornerstone for Business initiative

## EXECUTIVE FORUM



- Enhanced fireside chat with David Randich
- Companion podcast, YouTube show and Daniels Insights blog post

## CORNERSTONE FOR BUSINESS



- In-class student component
- Faculty-to-faculty component: interdisciplinary workshop
- Annual conference launched Spring 2025, with a planned Fall semester cadence starting in 2026

# *Movable Dream Hire Update – 7 new faculty*



Judson Caskey

Full Professor, Accounting

*Coming from: UCLA Anderson School of Management*

To Be  
Announced  
Spring 2026

Full Professor, Supply Chain

*Coming from: MIT*



Martin Dufwenberg

Full Professor, Economics

*Coming from: University of Arizona Eller College of Management*

To Be  
Announced  
Fall 2026

Full Professor, Economics

*Coming from: Western University - Canada*



Gwendolyn Lee

Full Professor, Strategic Mgmt.

*Coming from: University of Florida's Warrington College of Business*

To Be  
Announced  
Fall 2026

Full Professor, Quant Methods

*Coming from: Tel Aviv University*



Michael Weber

Full Professor, Finance

*Coming from: University of Chicago's Booth School of Business*

# *Fellows Program*

- 4 Distinguished Fellows – Global thought leaders
- 1 Executive Fellow - Executives that teach full courses
- 11 Business Fellows – affiliated with Daniels that have periodic student interaction

# *Development and New Building Update*

- 64% to goal; ahead of campaign pace of about 43%
- For the new building, have raised roughly \$75M, not counting unrestricted funds



Opening Fall 2027



Current Construction

***THANK YOU***



Mitch Daniels School of Business